

CYAN 40

© 2008 , . . . , . . .

[1-3].

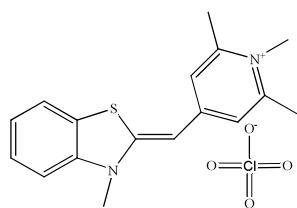
[4].

[5].

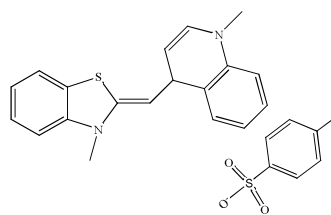
Cyan 40

()¹

+ , + () , , + . : + , ,



Cyan 40



TO

SA (Analyticjena,).

-12
IBM.

Specord 50

45°.

~5%.

0,5

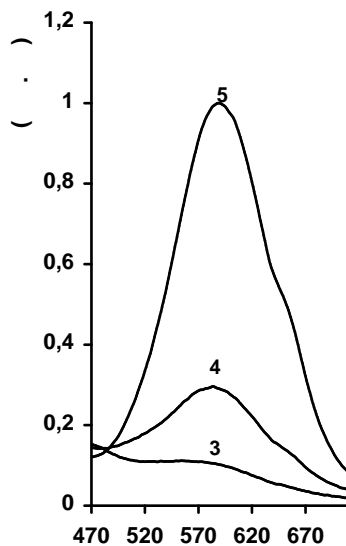
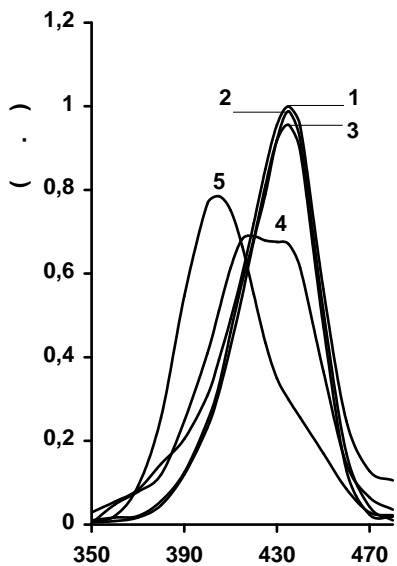
0,1 50

0,005

1

Cyan 40

Cyan 40.



. 1.

Cyan 40: $1-5 \times 10^{-6}$, $2-10^{-5}$, $3-2 \times 10^{-5}$, $4-2 \times 10^{-4}$, $5-2 \times 10^{-3}$ M.

. 1

$\lambda = 435$ ($2 \times 10^{-5} - 5 \times 10^{-6}$)

(. 1, 1).

(2, 3),

(4)

(5).

Cyan 40

Cyan 40

(. 1).

2×10^{-5}

Cyan 40

[6].

Cyan 40

).

$\lambda=648$
 $\lambda=556$

[7,8]

(λ) ,

(τ)

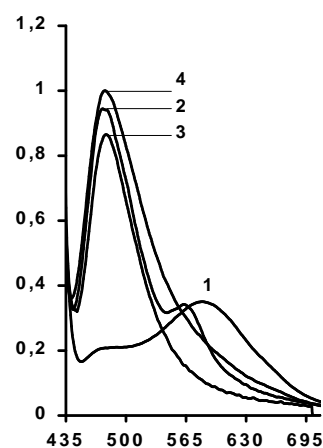
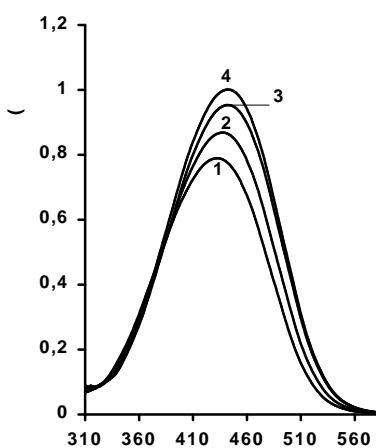
(ϵ) ,

(SS)

(λ)

(f_e) ,

		λ , ()	λ , ()	ϵ , ($\times 10^{-1}$)	f	τ , ()	SS ($^{-1}$)
Cyan 40		435	587	58600	0,95	3,3	6039
TO		502	545	59000	0,99	4,2	1571
Cyan 40		450	490	60000	0,87	3,8	1814
TO		505	554	34200	3,71	1,1	1751



2.
 Cyan 40 ($c=5 \times 10^{-5}$)
 , 2-1% +99%

()
 , 3-1% +99%

()
 : 1- +99%

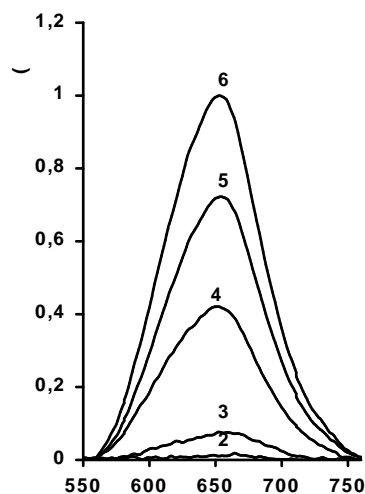
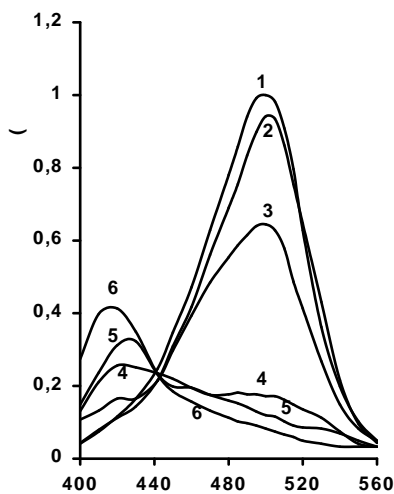
Cyan 40

$\lambda = 587$

$\lambda_a = 480$ (. 2 .).

TO.

(. 2 .).



. 3.

()

()

(=10⁻⁵)

: 1-0, 2-40%, 3-60%, 4-70, 5-80%, 6-96%

. 3

(=10⁻⁵).

(λ =430),

λ =655 ,

1. , 1976, -330 .
2. , //
3. Nizomov N., Prishepov A.S., Karpei A.L. Unusual induction of optical anisotropy in polymer media by low-intensity polarized X-rays // Journal Applied Spectroscopy, 1997, V.64, #5, p. 650–653.
4. Nizomov N., Ismailov Z. F., Nizomov Sh. N., Salakhitdinova M. K., Tatars A. L., Patsenker L. D., Khodjayev G. Spectral-luminescent study of interaction between squaraine dyes and biological matters // Journal of Molecular structure. 2006, V.788. p. 36-42.
5. , 1997.-145 .
6. Nugren J., Svanvik N., Kubista M. The interactions between the fluorescent dye thiazole orange and DNA // Biopolymers. 46, (1998), p. 39-51.
7. , 1976, - .41-87.
8. , 1989. -280c.